




Get To Know **EQUATOR** People. Planet. Purpose.



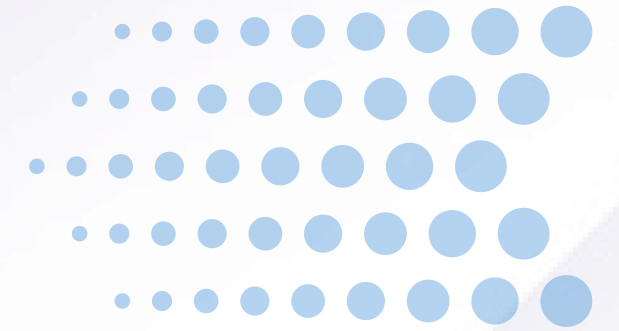
LPJP
Registered
Registered Professional
Service Provider



ISO
Certified
Quality, Safety, Environment,
Our Commitment

 www.equatorgroup.id 





**Safeguarding people, planet, prosperity, and principles,
Equator stands at the intersection of impact and integrity.**

A Glance of EQUATOR

Social and Environmental Consultant

Equator is a social and environmental consulting firm committed to delivering high-impact, inclusive, and sustainable solutions for development projects across Indonesia and beyond. The company has been operating since 1999, building a long-standing track record in supporting responsible development across diverse sectors.

We specialize in land acquisition and resettlement planning, stakeholder engagement, environmental and social impact assessments, and community-driven programs. Our team combines local knowledge with global best practices to ensure that development respects human rights, indigenous values, and environmental integrity.

Driven by integrity, innovation, and impact, Equator partners with governments, private sector clients, international development agencies, and grassroots communities to shape projects that are not only feasible but just and sustainable.

Guiding Principles

Vision

Leading the way in safeguarding people, planet, prosperity, and principles to pursue sustainable and resilient future

Mission

- Empower nations and businesses to thrive sustainably, ensuring long-term resilience in the face of global challenges.
- Provide innovative consulting solutions in social and environmental sustainability through specialized consultancy, research, and capacity-building services.

Core Values

GROWTH
RESPECT
AGILITY
COLLABORATION
INTEGRITY
SUSTAINABLE

Our Core Values



G

GROWTH



Assess the current situation, set clear objectives, and gather necessary resources for the change process.

R

RESPECT



Develop a detailed plan and strategy to guide the change, including identifying key stakeholders and defining roles.

A

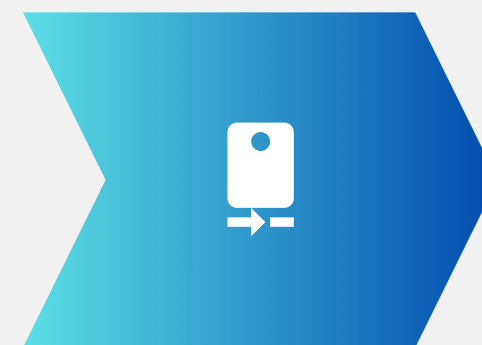
AGILITY



Execute the change plan, ensuring all actions are in line with the established strategy and objectives.

C

COLLABORATION



Integrate the changes into daily operations, providing support and reinforcement to ensure lasting adoption.

I

INTEGRITY



Evaluate the outcomes of the change process, gather feedback, and make necessary adjustments to improve results.

S

SUSTAINABLE



Evaluate the outcomes of the change process, gather feedback, and make necessary adjustments to improve results.

Our Corporate Credentials



01

LPJP Registered

- Registered Professional Service Provider

02

ISO Certified



ISO 14001:2015
Environmental Management System



ISO 9001:2015
Quality Management System

03

Non-Construction Consulting Business Certification

- Education Services
- Healthcare Services
- Agricultural and Rural Development Services
- Transportation Services
- Survey Services
- Study, Research, and Technical Assistance Services
- Management Consulting Services
- Telematics Services
- Tourism Services
- Industrial and Trade Services
- Mining and Energy Services
- Financial Services
- Population and Demographic Services
- Specialized Consulting Services

04

PT EGI - Indonesian Standard Industrial Classification (KBLI)

- **KBLI 70209** – Other Management Consulting Activities
- **KBLI 71102** – Engineering Activities and Related Technical Consultancy
- **KBLI 74909** – Other Professional, Scientific, and Technical Activities n.e.c. (Not Elsewhere Classified)
- **KBLI 71101** – Architectural Activities
- **KBLI 71202** – Laboratory Testing Services
- **KBLI 73202** – Public Opinion Polling
- **KBLI 72109** – Research and Experimental Development on Other Natural Sciences and Engineering
- **KBLI 46421** – Wholesale of Stationery and Drawing Supplies
- **KBLI 62090** – Other Information Technology and Computer Service Activities
- **KBLI 46422** – Wholesale of Printed Materials and Publications in Various Forms
- **KBLI 73201** – Market Research

Scope of Services



CONSULTANCY



RESEARCH



CAPACITY BUILDING



Social



Environmental

End-to-End Services

At Equator, we provide end-to-end consulting services that align with the full project lifecycle, ensuring sustainability, compliance, and community-centered impact at every stage.



Assessment and Planning

We build strong project foundations through rigorous assessment, strategic planning, and inclusive engagement—ensuring clarity, insight, and responsibility from the start.



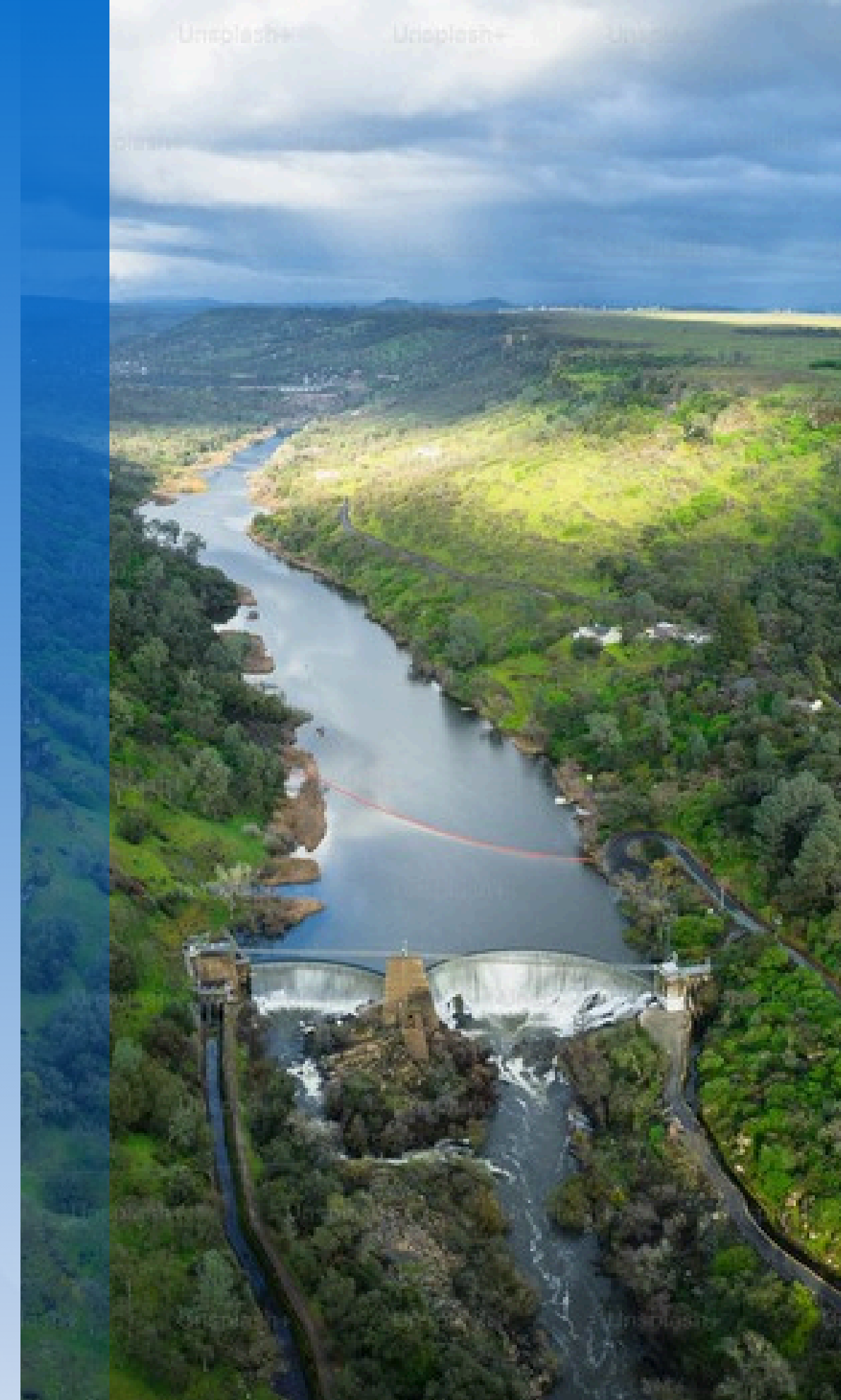
Implementation and Assistance

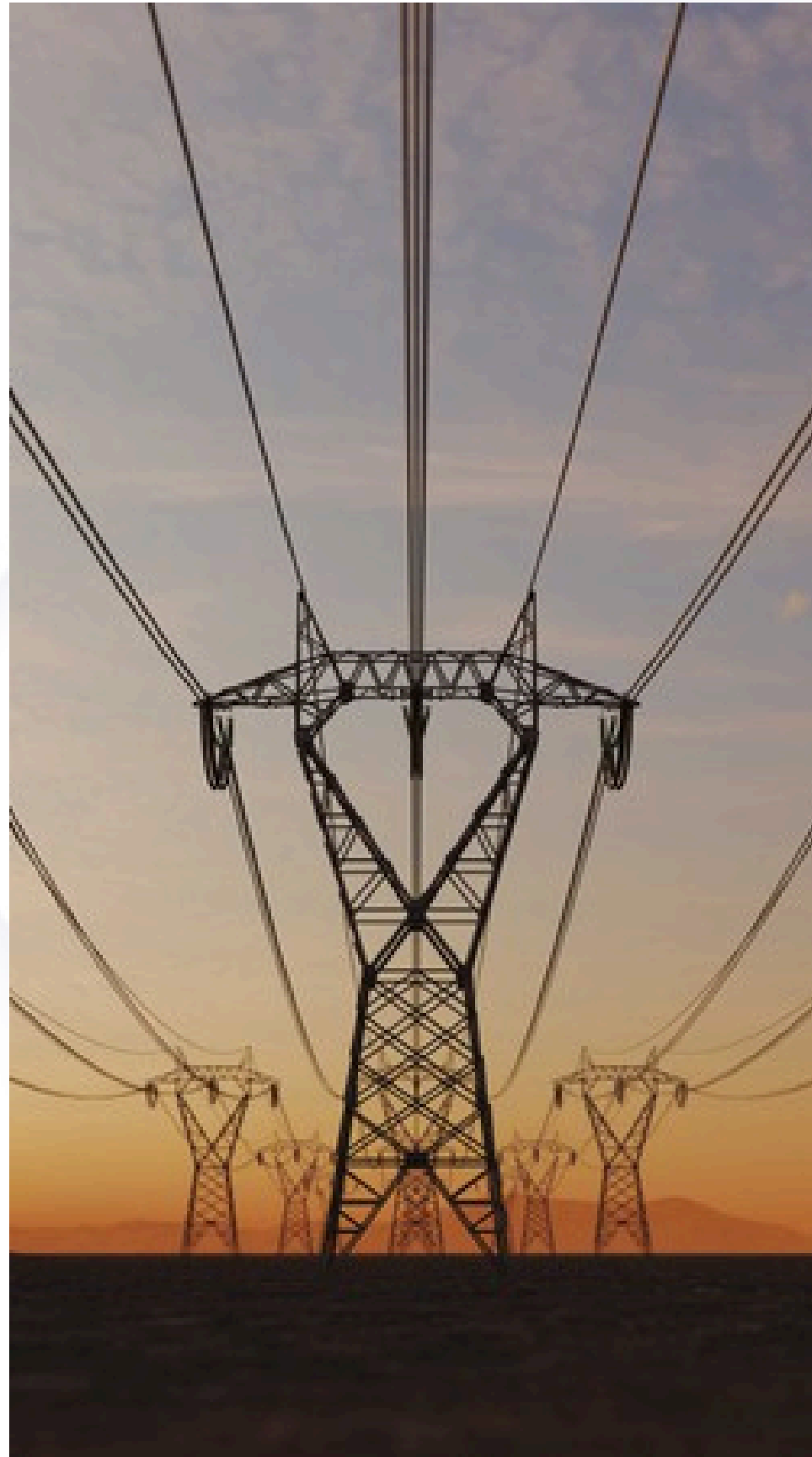
We support effective plan implementation, ensuring compliance, stakeholder trust, and lasting impact.



Monitoring and Evaluation

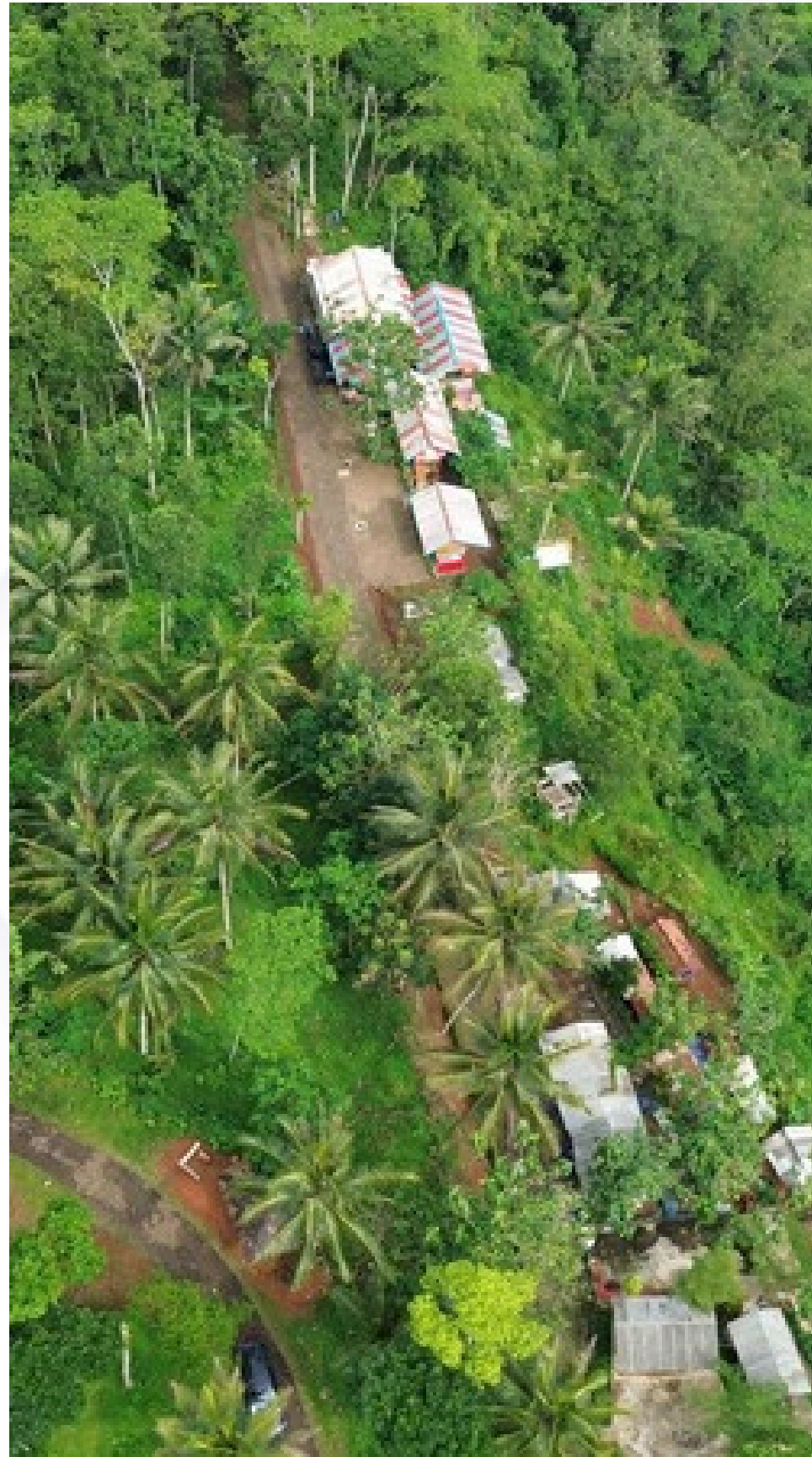
We deliver robust monitoring and evaluation to ensure accountability, enhance impact, and sustain long-term progress.





Social and Environmental **Assessment and Planning**

- Land Acquisition and Resettlement Plan (LARAP)
- Environmental and Social Impact Assessment (ESIA)
- Environmental Permitting (AMDAL/EIA, UKL-UPL, SPPL, etc.)
- Social Impact Assessment (SIA)
- National Land Acquisition Document (DPPT)
- Feasibility Study (FS)
- Indigenous Peoples Plan (IPP)
- Livelihood Restoration Program (LRP)
- Indigenous Peoples Plan (IPP)
- Stakeholder Engagement Plan (SEP)



Social and Environmental **Assessment and Planning**

- Grievance Redress Mechanism (GRM)
- Environmental and Social Management Plan (ESMP)
- Carbon Footprint Assessment
- Biodiversity Management Plan
- Cultural Heritage Management Plan
- Air Quality and Emission Studies
- GIS Data Creation and Analysis
- Remote Sensing and Topographic Data Collection
- Landscape Architecture Planning
- Urban Design Planning



Social and Environmental **Implementation and Assistance**

- Land Acquisition Assistance (National Regulation)
- Land Acquisition Process (Business-to-Business)
- Permitting Support (KKPR, IUI, IKI, KEK, etc.)
- Waste and Wastewater Management
- Conflict Resolution Management
- Environmental and Social Safeguards-related Capacity Building (with NLC)
 - Environmental and Social Impact Assessment Training
 - Land Acquisition and Resettlement Action Plan Training
 - Indigenous People Plan Training
 - Biodiversity Management Plan Training
 - Other Trainings



Social and Environmental **Monitoring and Evaluation**

- Internal Safeguards Monitoring and Evaluation
- External Safeguards Monitoring and Evaluation
- Environmental Compliance Audit
- Program Impact Evaluation
- Carbon Emission Monitoring

Our Featured Projects (Commenced 2026)

No	Job Package Name	Field	Location	Client
1	Konsultasi Penyusunan Dokumen AMDAL dan ESIA-ESMP	ESIA, RAP , AMDAL, ANDALALIN	Lawang, Malang, Jawa Timur	RSJ Dr. Radjiman Wediodiningrat - Kemenkes - AIIB
2	Konsultasi Penyusunan Dokumen AMDAL dan ESIA-ESMP	ESIA, RAP , AMDAL, ANDALALIN	Kota Tangerang, Provinsi Banten	RSUP Dr. Sitanala - Kemenkes - AIIB
3	Konsultasi Penyusunan Dokumen AMDAL dan ESIA-ESMP	ESIA, RAP , AMDAL, ANDALALIN	Kab. Bogor	RS Goenawan Partowidigdo - Kemenkes - AIIB
4	Konsultasi Penyusunan Dokumen AMDAL dan ESIA-ESMP	ESIA, RAP , AMDAL, ANDALALIN	Semarang, Jawa Tengah	RSUP Dr. Kariadi JV with PT MAP - Kemenkes - AIIB
5	Penyusunan Dokumen Kesesuaian Kegiatan Pemanfaatan Ruang (KKPR) Rencana Pembangunan Jakarta Sewerage Development Project (JSDP) Zone 6 Fase 1	KKPR	Jakarta	SDA DKI Jakarta

Our Featured Projects (Commenced 2025)

No	Job Package Name	Field	Location	Client
1	Sub-Consultant LARAP for Environmental and Social Impact Assessment (ESIA) and supplementary studies in accordance with the international standards (Equator Principles and IFC Performance Standards) in Malili, Wasuponda and Towuti Districts of East Luwu Regency	LARAP	South Sulawesi, Indonesia	AFRI for PT Indonesia Huali Industry Park (IHIP) and PT Huali Nickel Indonesia (HNI)
2	Consultancy Services on Land Acquisition and Livelihood Restoration Plan (LALRP) Study for Mentarang Induk Hydroelectric Project Overhead Transmission Line	LARAP, LRP, CHMP, IPP, SEP, GRM, CRM	North Kalimantan, Indonesia	PT Kayan Hydropower Nusantara (JV Alamtri (Adaro), Sarawak Energy, and KPP)
3	External Monitoring pada Consulting Service for The Construction Supervision of Patimban Access Toll Road Construction Project JICA Loan No. IP-586	External Monitoring Safeguard, LRP	West Java, Indonesia	Directorate General of Highways Ministry of Public Works with PT Virama Karya (Persero)
4	Penyusunan DP3 (Dokumen Proposal Proyek Prakarsa) Pengusahaan Jalan Tol (Pluit – Bandara) DPPT dan Utilitas	DPPT for DP3 (Dokumen Proposal Proyek Prakarsa)	DKI Jakarta and Banten, Indonesia	PT Citra Marga Nusaphala Persada Tbk
5	Energy Transition Acceleration Programme (ETAP)- Component 1: Consulting services to strengthen PLN's capacity with regard to the implementation of international social and environmental standards	Capacity Building, ESMS, E&S Due Diligence	National	PT PLN (Persero), JV with OPML

Our Featured Projects (Commenced 2024)

No	Job Package Name	Field	Location	Client
6	Mentarang Induk Hydroelectric Project Provision of Land Acquisition and Resettlement Action Plan (LARAP) Phase II Study for Mentarang Induk Hydroelectric Project	LARAP, LRP , SEP, GRM, CRM	North Kalimantan, Indonesia	PT Kayan Hydropower Nusantara (JV Alamtri (Adaro), Sarawak Energy, and KPP)
7	Supporting LARAP for Consultancy Services for The Preparation of Larap Study (Land Acquisition and Resettlement Action Plan) and Land Acquisition Planning Documents, West Java, Indonesia - Matenggeng Pumped Storage 943 MW	LARAP, LRP , Relocation Plan, DPPT, GRM	West Java, Indonesia	Support UGM for PT PLN UIP JBT Project
8	Preparation of Dokumen Perencanaan Pengadaan Tanah (DPPT) and Feasibility Study for Kamal (North Jakarta), Rawa Lindung (South Jakarta), Kebagusan (South Jakarta), Jati Kramat (East Jakarta), Duren Tiga (South Jakarta) Reservoir Development Plan	FS and DPPT	DKI Jakarta, Indonesia	Dinas Sumber Daya Air, DKI Jakarta
9	Masterplan Document Preparation Work Takalar Industrial Area, KKPR and IUI Management	Feasibility Study , KKPR and IUKI Management	South Sulawesi, Indonesia	PT KITA (Tiran Group)
10	Land Analysis and Soil Sample Collection Project in Central and East Java, PT Eidara Matadata Presisi - PT Riset Perkebunan Nusantara	Soil Suitability Analysis part of Feasibility Study	Central and East Java, Indonesia	PT Eidara Matadata Presisi - PT Riset Perkebunan Nusantara

Our Featured Projects (Commenced 2023)

No	Job Package Name	Field	Location	Client
11	Sub-Consultant LARAP for Penlok Bahodopi dan Penlok/LARAP-FEL3 Pomalaa <ul style="list-style-type: none"> Bahodopi Location Determination (Penlok) Pomalaa Location Determination (Penlok) Preparation of Land Acquisition Planning Documents (LARAP/FEL3) 	LRP, LARAP/FEL3 Survey, Penlok Implementation, GRM and SEP	Central Sulawesi and Southeast Sulawesi, Indonesia	Support Greencorp for PT Vale Project
12	Supporting LARAP for Socio-economic Baseline Survey for ESIA, LARAP and SEP Preparation for the Indonesia Batam-Bintan Bridge Project	LRP, ESIA, LARAP and SEP	Batam, Indonesia	Support PT Bitra (Subconsultant to ARUP) for the AIIB Project
13	External Social Safeguard Monitoring for CW - 1, 2, 3, 4A and 4B Under Flood Management in Selected River Basin Sector Project (FMSRBSP)	LRP, External Monitoring Safeguard	Banten and Maluku, Indonesia	Director General of Natural Resources, Ministry of PUPR-ADB
14	Preparation of AMDAL Document for ongkong Multipurpose Dam, Rongkong, South Sulawesi (Subcon)	AMDAL, Environmental Permit	South Sulawesi, Indonesia	ACE Pvt. Ltd.
15	Preparation of a Feasibility Study Reservoir Development Plan of Kamal, Rawa Lindung, Duren Tiga, Jati Kramat, Kali Apuran, Cakung Lama, Kayu Putih, Bulak Cabe.	Feasibility Study	DKI Jakarta, Indonesia	Dinas Sumber Daya Air, DKI Jakarta

Our Featured Projects (Commenced 2022)

No	Job Package Name	Field	Location	Client
16	Sub-Consulting for Preparation of AMDAL Document for Warsamson Multipurpose Dam, Warsamson, West Papua (Subcon)	AMDAL, Environmental Permit	West Papua, Indonesia	ACE Pvt. Ltd.
17	Sub-Consultant LARAP for Social Safeguard, LARAP, And Gender Responsive Analysis for Raw Water Intake and Transmission from Kertasari and Jatigede System in West Java Province and Lau Simeme in North Sumatera Province (Subcon)	LRP, LARP , DPPT, Safeguards Survey	West Java and North Sumatera, Indonesia	Oriental Consultants Global Co., Ltd for PUPR Project
18	Training and Workshop on Procedures for Implementing Land Acquisition for Development for The Public Interest with PLN UPDL Makassar (Phase I).	Training - Land Acquisition for Development for The Public Interest (include LRP)	Makasar	PT PLN (Persero)
19	Due Diligence and LARAP Preparation for Pomalaa High Pressure Acid Leach Nickel Project, Indonesia, International Finance Corporation Gap Fulfilment (ESIA -LARAP Study) for Pomalaa High Pressure Acid Leach Nickel Project, Indonesia	LRP , ESIA, LARAP	South East Sulawesi, Indonesia	PT Vale Indonesia, JV with Hatfield

Our Featured Projects (Commenced 2021)

No	Job Package Name	Field	Location	Client
20	ADB TA-9861 INO: Sustainable Infrastructure Assistance Program Phase II - Supporting Sustainable and Universal Electricity Access Phase 2 (Subproject 3) - Environmental and Social Safeguards Firm (52152-003)	LRP , Capacity Building, LARAP , GRM, SEP, CHMP, BMP, ESMP, ESMF, ESIA	National	Asia Development Bank & PLN, JV with Hatfield
21	Update ESIA-LARAP for PLTP Mataloko (20 MW) & Ulumbu (20 MW) Geothermal Power Plant Project - KfW Development Bank	LRP , LARAP , Safeguard Survey, GRM, SEP, Environmental Permit, ESIA	East Nusa Tenggara, Indonesia	PT. PLN Persero, UIP Nusra, JV with Connusa
22	LARAP Preparation and Land Acquisition Implementation for Development of Endikat River Hydroelectric Power Plant (HEPP)	LRP , LARAP , GRM, SEP, Environmental Permit, ESIA	Borneo, Maluku, Papua, Sulawesi, Indonesia	PT Energi Banyu Kencana (EBK)
23	Subconsulting for Construction Management Consultant Services for Bara Lestari Housing Development I Phase II (SPPH-11925.1)	Construction Management	South Sumatera, Indonesia	PT. Bukit Asam Tbk
24	Consultation Services on Socialization (Public Consultation) to Fisherman at Cirata Project (2021), IFC	LRP , Safeguard	West Java	PT Pembangkitan Jawa Bali Masdar Solar Energi

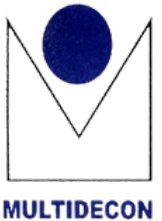
Our Featured Projects (Commenced 2019-2020)

No	Job Package Name	Field	Location	Client
25	External Social Safeguard Monitoring for CW - 1, 2, 3, 4A and 4B Under Flood Management in Selected River Basin Sector Project (FMSRBSP)	LARAP, LRP , External Monitoring Safeguard	Banten and Maluku, Indonesia	Ministry of PUPR and ADB
26	AA-P167568-ASA-TFOA7983 - Advisory Services and Analytics-TFOA7983, Country Safeguard Framework Assessment (CSFA)	Social Safeguards	DKI Jakarta, Indonesia	World Bank Jakarta
27	UKL-UPL Application Document Preparation Services Consent to Use Forest Area (PPPKH) For PT DMP Gold Mining Exploration Activities. Woyla Aceh Minerals (JV With PT Ayamaru Bakti Pertiwi) (Subcon)	Environment Permit / UKL-UPL	Aceh, Indonesia	PT. Woyla Aceh Minerals
28	TA-8484 INO: Sustainable Infrastructure Assistance Program - Technical Assistance Cluster Management Facility (Subproject 1) - Capacity Development Specialist (46380-003)	Capacity Building, LARAP , GRM, SEP, ESIA	National	Asia Development Bank (ADB)
29	Supporting LARAP for Land Acquisition and Resettlement Action Plan (LARAP) Pokko Hydro Electric Power Plant, World Bank	LARAP, LRP , GRM, SEP, IP	West Sulawesi and South Sulawesi, Indonesia	Universitas Hasanuddin for PLN Project with World Bank Funding

Our Clients



Our Partners



Our Ecosystem



LPM Equator (Lembaga Pengembangan Masyarakat Equator)

A nationwide network of local branches established since 1999, Lembaga Pengembangan Masyarakat Equator connects professionals and communities across all Indonesian provinces. Through decades of experience, Equator continues to serve as a trusted partner in advancing socially and environmentally responsible development.



NLC (Network of Learning Center for Environmental and Social Sustainability)

A learning platform dedicated to Environmental and Social Sustainability, initiated in collaboration with the World Bank, ADB, BAPPENAS, and leading universities in Indonesia. NLC provides structured capacity-building programs and facilitates continuous professional learning to strengthen ESS implementation nationwide.



ESS TV

An educational media initiative that delivers free, accessible learning content on Environmental and Social Safeguards to the public. The Safeguards Forum aims to mainstream safeguard knowledge, promote sustainable practices, and build awareness among stakeholders from both public and private sectors.



SSF Indonesia (Social Safeguards Forum Indonesia)

An open online forum for dialogue, collaboration, and knowledge exchange on social safeguards. SSF Indonesia brings together consultants, government officials, private sector representatives, NGOs, academics, and community leaders to share insights, discuss challenges, and promote best practices in safeguard implementation.




FORDATIN (Forum Pengadaan Tanah Indonesia)

A dedicated forum focusing on land acquisition issues in Indonesia, FORDATIN brings together diverse stakeholders to deepen their understanding of land procurement practices. The forum explores the regulatory framework, advocacy strategies, and field implementation challenges, serving as a collaborative knowledge-sharing platform for government agencies, consultants, academics, practitioners, civil society, and private sector actors involved in land acquisition processes.

LET'S CONNECT WITH US!

Please contact us for more information or to start a discussion.

 +62 819-1111-7109

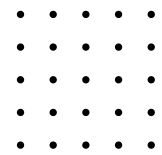
 www.equatorgroup.id

 office@equatorgroup.id

 Jl. Letjen. Ibrahim Adjie 197, Bogor Indonesia 16117

 Centennial Tower Level 29 Unit D-F Suite 12
Jl. Jend. Gatot Subroto Kav. 24-25
South Jakarta Indonesia 12930





We're Just One Message Away!



EQUATOR - Safeguarding Sustainable Future

